

# 2024



# SUPPORTED LIVING

24 Hour support for venerable adults with complex needs in supported accommodation



# About Us

## Discover Seacole Healthcare Empowering Lives, Every Step of the Way

Seacole Healthcare supports your journey to community integration with personalized care, focusing on your well-being and independence.

### Personalized support

Expressing dedication to standing by your side through your journey with tailored care and attention.



### Promoting independence

Encouraging and supporting you to be in charge of your own life and choices.

### Well-being

Helping you take charge of your health and life, so you feel more confident and capable.

- 
- 
- 
- 
- 

# Our Services



**Seacole Healthcare's Care Services Team  
Help you feel at home and supported every  
step of the way**

At Seacole Healthcare, we support adults with mental health challenges, learning disabilities, and substance misuse recovery.

Our caring team provides personalized care in a safe environment, promoting independence and community integration while honoring cultural values. Key service areas include:



Mental health support with personalized care plans



Community integration activities and assistance with daily living tasks



24/7 support from qualified and trained staff





# Our Process



## Unlocking Your Well-Being: How Seacole Healthcare Puts You First

At Seacole Healthcare, we prioritize a seamless and personalized approach to delivering our care services.

Our process is outlined as follows:

**Initial Inquiry:**  
We evaluate your needs upon receiving your message, offering a brief on services and pricing.

**Assessment:**  
Our team visits you at home to better understand your needs, ensuring personalized care that fits just right.

**Staff Selection:**  
We match caregivers to your needs, introduce them, and handle all necessary preparations. Your care journey starts with dedicated support.

**Care Plan Finalization:**  
Collaborating with you and your family, we finalize your care plan to ensure alignment with your preferences.

Your journey begins!





# Resident Feedback



## Your Voice Matters: Resident Feedback and Testimonials



"I really appreciated how they took the time to understand what I needed."

**Kingfield Resident**  
June, 2020



"The staff were super friendly and always made me feel at ease."

**Johnston Resident**  
February, 2023



"The team is great—it felt like they really cared about making things right for me."

**Holland Resident**  
October, 2022



"From the get-go, I felt like they had my back and were there to help me stay independent."

**Pinewood Resident**  
December, 2023

Our Open Door Policy gives residents a voice, whether it's to share compliments, suggestions, or even raise a concern. We're all ears and here to make sure your experience is the best it can be!

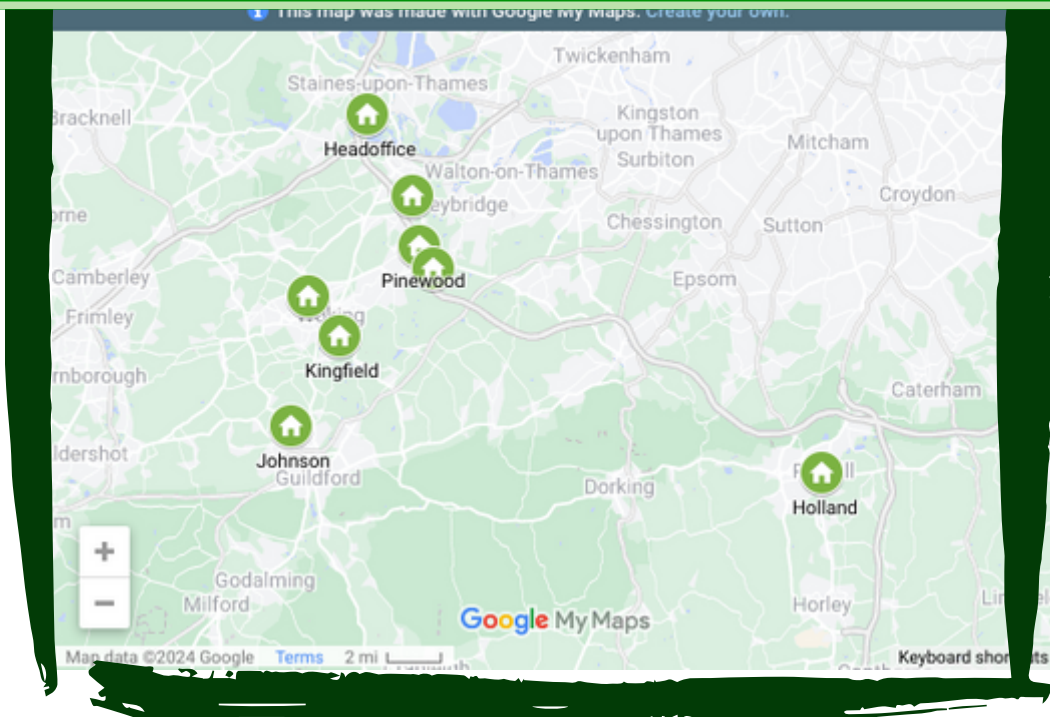


# Our Locations

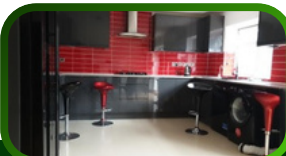
From comfy apartments to shared living, our homes are modern and equipped with assistive technology if needed.

All Located within communities for convenience, our supported living schemes prioritize residents' independence.

Your journey begins!



We personalize each transition to ensure a smooth and positive experience, providing support and encouragement every step of the way.



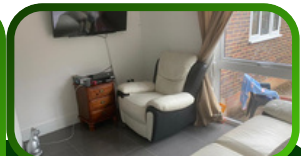
## Kingfield House, Woking

4 Double Bedrooms (2 Ensuite)

Kingfield gardens is within walking distance to Woking town centre. With:

Two double bedrooms and two with ensuite including a shower and toilet.

Male Only  
Bungalow



## Johnson House, Guildford

4 Double bedrooms with Ensuite, 1 Double Bedroom, 1 Studio Apartment

Kingfield gardens is within walking distance to Woking town centre. With:

Two double bedrooms and two with ensuite including a shower and toilet.

Find out more  
>>>link to video



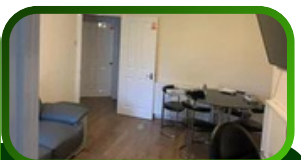
## Pinewood House, Addlestone

4 Double Bedrooms, (2 Ensuite)

Kingfield gardens is within walking distance to Woking town centre. With:

Two double bedrooms and two with ensuite including a shower and toilet.

Find out more  
>>>link to video



## Prairie House, Woking

3 Double Bedrooms

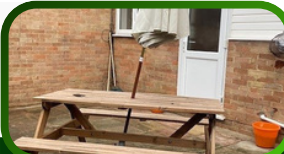
Kingfield gardens is within walking distance to Woking town centre. With:

Two double bedrooms and two with ensuite including a shower and toilet.

Find out more  
>>>link to video







## Holland House, Woking

2 Bedrooms, 2 Ensuite bedrooms

Kingfield gardens is within walking distance to Woking town centre. With:

Two double bedrooms and two with ensuite including a shower and toilet.

Find out more  
>>>link to video



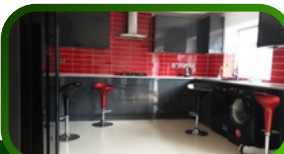
## 26 High House, Woking

2 Bedrooms, 2 Ensuite bedrooms

Kingfield gardens is within walking distance to Woking town centre. With:

Two double bedrooms and two with ensuite including a shower and toilet.

Find out more  
>>>link to video



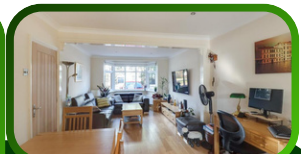
## Elcauma House, Addlestone

2 Bedrooms, 2 Ensuite bedrooms

Kingfield gardens is within walking distance to Woking town centre. With:

Two double bedrooms and two with ensuite including a shower and toilet.

Find out more  
>>>link to video



## Upcoming Home 1

Kingfield gardens is within walking distance to Woking town centre. With:

Two double bedrooms and two with ensuite including a shower and toilet.

Find out more  
>>>link to video

# Your Journey

**Discover Seacole Healthcare  
Empowering Lives, Every Step of  
the Way**



When you arrive, you'll find bedding and towels ready for you. But feel free to make your space your own with personal touches!



Your home is looked after by a caring manager who is a registered mental health nurse. And don't worry – there's always someone here to help, day or night!



Our maintenance team is here around the clock to make sure everything stays in top shape. So, if you need any help with your room, just let us know!



Let's plan your days together, stay organized with regular meetings, and aim high in both education and employment!



# Our Guidelines



**In fostering a harmonious living environment, we appreciate residents adhering to some basic guidelines.**



Smoking is limited to the garden area, while alcohol and drugs are prohibited to support everyone's recovery journey.



Visitors are warmly welcomed, but for everyone's safety, we ask that visits be planned accordingly. Additionally, residents are expected to return to the building by 22:00 hours, or to inform staff in advance if they plan to stay out overnight.



Housekeeping involves residents using custom checklists to tidy their rooms weekly, while staff ensure daily cleaning and weekly deep cleaning of shared spaces for a clean and comfortable living environment



Cooking is encouraged for those who wish to prepare their own meals, with staff available to lend a hand when needed.

These guidelines foster mutual respect, safety, and well-being in our community, creating a nurturing environment for all residents to thrive





# What we believe

## Our Core Beliefs: Guiding Principles for Compassionate Care and Community

At Seacole Healthcare, we're dedicated to creating an environment where individuals can flourish and overcome emotional and behavioural challenges. Here's what we believe in:



Upholding Civil and Human Rights



Crafting Personalized Care Plans



Fostering Collaboration and Creative Solutions



Empowering Independence



Embracing Diversity and Inclusion



Implementing Rigorous Staff Recruitment



# GET IN TOUCH



24 Hour support for venerable adults with complex needs in supported accommodation