

2024



SUPPORTED LIVING

24 Hour support for venerable adults with complex needs in supported accommodation



Our Story

Discover Seacole Healthcare Empowering Lives, Every Step of the Way

Seacole Healthcare supports your journey to community integration with personalized care, focusing on your well-being and independence.

Personalized support

Expressing dedication to standing by your side through your journey with tailored care and attention.



Promoting independence

Encouraging and supporting you to be in charge of your own life and choices.

Well-being

Helping you take charge of your health and life, so you feel more confident and capable.



-
-
-
-
-

Our Services



**Seacole Healthcare's Care Services Team
Help you feel at home and supported every
step of the way**

At Seacole Healthcare, we support adults with mental health challenges, learning disabilities, and substance misuse recovery. Our caring team provides personalized care in a safe environment, promoting independence and community integration while honoring cultural values. Key service areas include:



Mental health support with personalized care plans



Community integration activities and assistance with daily living tasks



24/7 support from qualified and trained staff

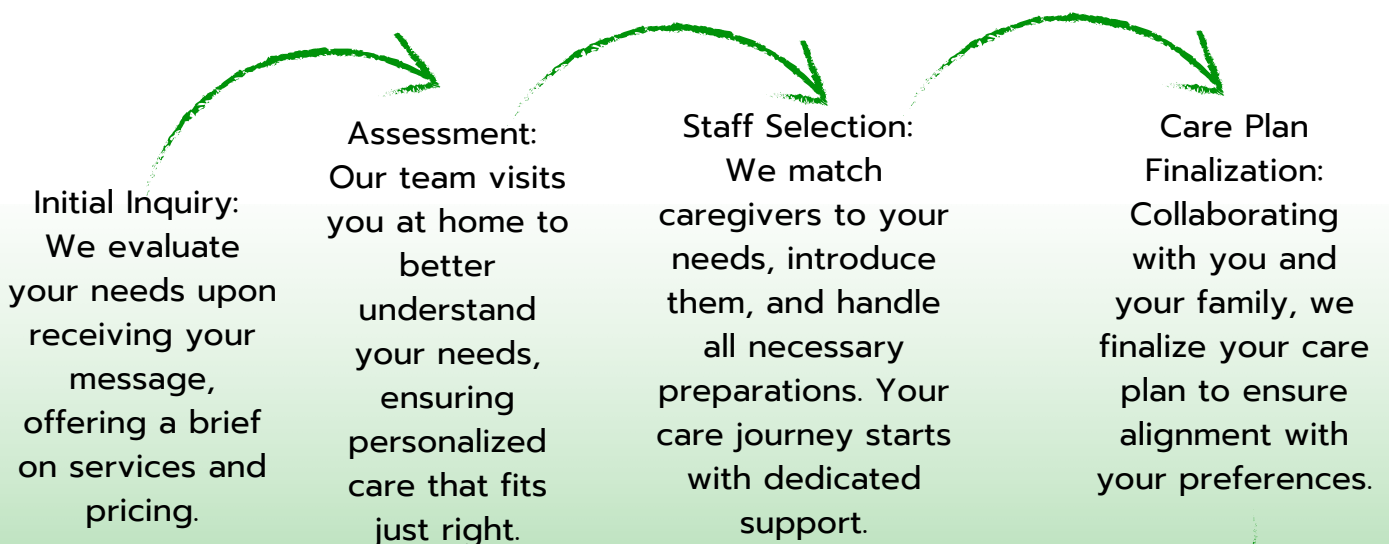


Our Process



Unlocking Your Well-Being: How Seacole Healthcare Puts You First

At Seacole Healthcare, we prioritize a seamless and personalized approach to delivering our care services. Our process is outlined as follows:



Your journey begins!





Resident Feedback

Unlocking Your Well-Being: How Seacole Healthcare Puts You First



"I really appreciated how they took the time to understand what I needed."

Kingfield Resident
June, 2020



"The staff were super friendly and always made me feel at ease."

Johnston Resident
February, 2023



"The team is great—it felt like they really cared about making things right for me."

Holland Resident
October, 2022



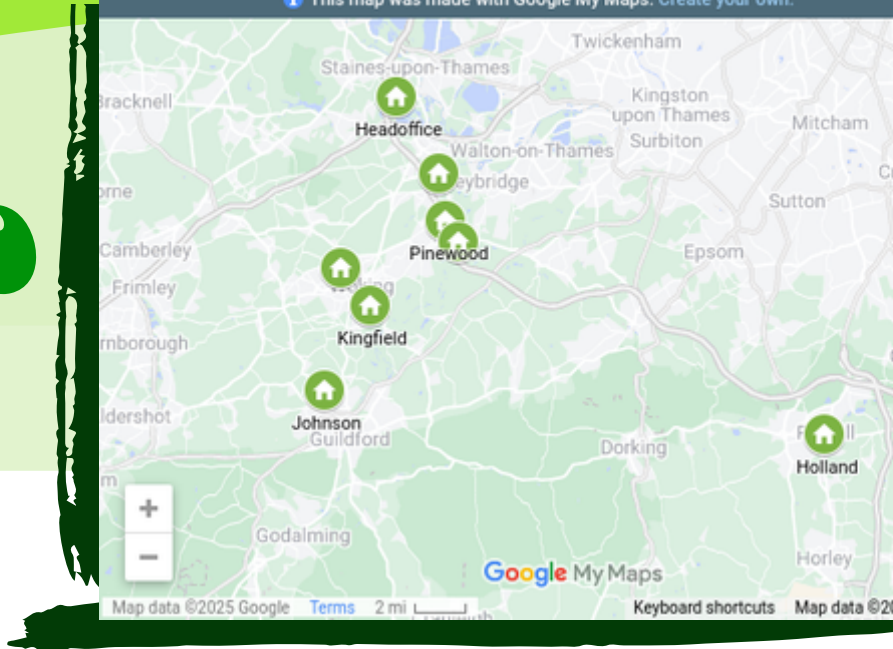
"From the get-go, I felt like they had my back and were there to help me stay independent."

Pinewood Resident
December, 2023

Our Open Door Policy gives residents a voice, whether it's to share compliments, suggestions, or even raise a concern. We're all ears and here to make sure your experience is the best it can be!

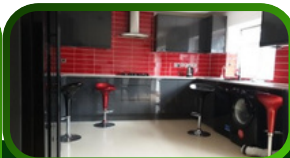


Our Locations



We've teamed up with local authorities and Affluence properties to offer various housing options tailored to individual needs.

From ...Mixed sex homes to ----->



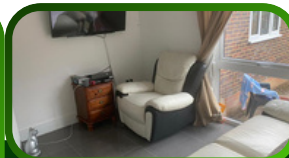
Kingfield House, Woking

4 Double Bedrooms (2 Ensuite)

Kingfield gardens is within walking distance to Woking town centre. With:

Two double bedrooms and two with ensuite including a shower and toilet.

[Find out more](#)
[>>>link to video](#)



Johnson House, Guildford

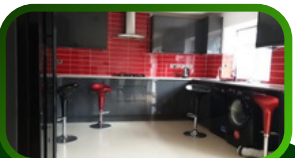
4 Double bedrooms with Ensuite, 1 Double Bedroom, 1 Private Studio Apartment

Kingfield gardens is within walking distance to Woking town centre. With:

Two double bedrooms and two with ensuite including a shower and toilet.

[Find out more](#)
[>>>link to video](#)





Pinewood House, Addlestone

2 Bedrooms, 2 Ensuite bedrooms

Featuring four comfortable bedrooms, a shared bathroom, a spacious communal area perfect for socializing or relaxing, and a large garden where residents can enjoy outdoor activities or simply unwind in nature.

[Find out more](#)
[>>>link to video](#)

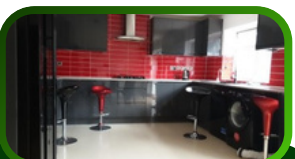


Prairie House, Woking

2 Bedrooms, 2 Ensuite bedrooms

Prairie house feature three bedrooms, a shared bathroom, a welcoming communal living room, and a modern kitchen. With its accessible layout and tranquil setting, this bungalow offers the perfect balance of comfort and support, empowering residents to thrive and enjoy a fulfilling lifestyle.

[Find out more](#)
[>>>link to video](#)

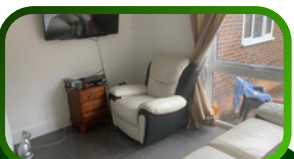


Holland House, Woking

4 Double bedrooms 1 Share Bathroom

Two spacious double bedrooms and two additional double bedrooms with en-suite facilities, including a shower and toilet. With 24-hour support, residents can enjoy a safe, comfortable, and empowering space designed to foster independence and community in a prime location.

[Find out more](#)
[>>>link to video](#)



26 High House, Woking

5 Bedrooms, 2 Bathrooms with shower and Bath

Five comfortable bedrooms, two bathrooms with toilets, a well-equipped kitchen, a cozy lounge, a welcoming dining area, and an office space. Designed to foster independence and community, this home provides the perfect balance of comfort, accessibility, and connection.

[Find out more](#)
[>>>link to video](#)








Elcauma, Woking

4 rooms en suite. 1 shared bathroom

Featuring four well-appointed en-suite rooms for added privacy and convenience, along with a shared bathroom for flexibility. Designed for comfort and accessibility, this bungalow fosters independence while offering a warm and welcoming space where residents can thrive.

[Find Out More](#)






Upcoming Home Croyden

Within walking distance to Woking town centre. With:

Two double bedrooms and two with ensuite including a shower and toilet.

Find Out More

From comfy apartments to shared living, our homes are modern and equipped with assistive technology if needed. Located within communities for convenience, our supported living services prioritize residents' independence. We personalize each transition to ensure a smooth and positive experience, providing support and encouragement every step of the way.



Our Team

Discover Seacole Healthcare Empowering Lives, Every Step of the Way



Seacole Healthcare supports your journey to community integration with personalized care, focusing on your well-being and independence.



Seacole Healthcare supports your journey to community integration with personalized care, focusing on your well-being and independence.



Our Open Door Policy gives residents a voice, whether it's to share compliments, suggestions, or even raise a concern. We're all ears and here to make sure your experience is the best it can be!





GET IN TOUCH



24 Hour support for venerable adults with complex needs in supported accommodation